

Panchmukhi
RESIDENCY



Panchmukhi
RESIDENCY

Survey No. 1173, Behind GEB Office,
Village Balitha, NH 48, Balitha, VAPI

info@sayandevlopers.com
www.sayandevlopers.com



1-2 BHK
LUXURIOUS FLATS

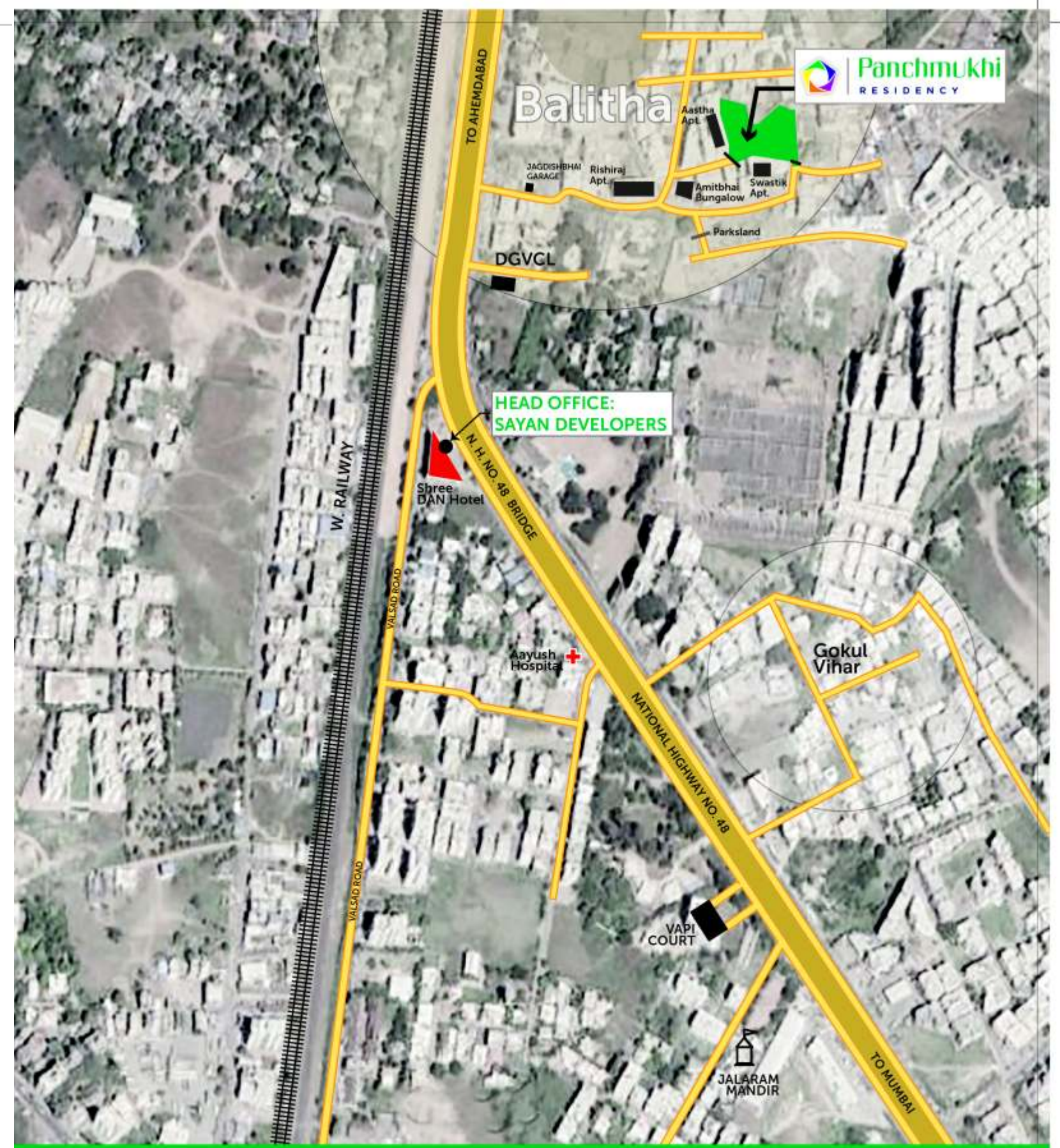
a new world,
a new life awaits you....



Residency surrounded by Asopalav trees bringing a hope of love & life.
 Making life valuable in everything we do.
 Cool atmosphere in the hands of safeguards and nurtures what ever it holds.



Visual Presentation



A PROJECT BY
SAYAN DEVELOPERS

ENGINEER & DESIGNER
SHILPAM
 Manish A. Shah
 Tel.: 0260 2422335

LEGAL ADVISOR
SHAILESH BHAI N. MEHTA
 Near Galaxy Hotel, GIDC, VAPI
 M. 98251 42758

BOOKING CONTACT: **+91 81413 65908 / 81413 64358**

NOTE

The developers reserve the rights to change or revise or make any modifications, additions, omissions or alterations in the scheme as a whole of their sole discretion without any prior notice, such changes would be binding to all the members. All the architectural & interior views in brochure are computer graphics simulated interpretation of the actual property. All the dimensions given are approximate & from unfinished surfaces. The brochure is just for an easy presentation of the project and should not be treated as a legal document. No external changes are allowed except internal changes if permissible would be carried out and charge extra in advance. Legal documentation charges, stamp duty for registration, Advocate charges, G.E.B. Installation and electric meter charges, G.S.P.C. Gas Line Charges, Service Tax, G.S.T., Any additional charges or duties levied by the Government/Local authorities during or after completion of the scheme like betterment charge Temple maintenance (deposits), will be born and paid by the purchaser. Possession of the unit's shall be delivered only after full payment. All matters subject to Vapi Jurisdiction only.

SPECIFICATIONS

Flooring

- Vitrified tiles flooring of 2'x2' in all rooms.

Kitchen

- Granite kitchen platform with stainless steel sink
- Designer glazed tiles dado up to 4'0". height above kitchen platform

Doors

- Wooden frame laminated waterproof decorative main entrance flush door with all necessary fittings
- Internal flush door with oil paint finish in all other rooms

Windows

- Powder coated aluminum sliding windows with tinted glass and mosquito netting in one Shutter with granite & marble sills
- Powder coated aluminum lowered ventilator for bath/W.C. with granite & marble sills
- Full height French sliding windows in living room with granite & marble sills.

Toilets

- Anti-skid flooring tiles and Attractive Designer wall glaze tiles dado up to lintel level in all bath/ M.bath/W.C.
- Black granite door frames in bath & W.C. with FRP. /PVC.- Doors wall hung W.C.

Plumbing

- Concealed plumbing with premium Quality fittings sanitary ware in all bath.
- Hot & cold Mixture with overhead shower

Electrification

- Concealed Copper Wiring With MCB, Standard Quality Switches With Sufficient Light Point & TV, Point & Sufficient Domestic Points As Per Architect's Detail.

Wall Finish

- Internal single coat sand faced plaster with white wash

FACILITIES

Campus Planning

- Underground Water Tank
- Generator Backup For Common Utility
- Central Garden with Surrounding Buildings
- Temple

Panchmukhi Campus Living Style

- Children's Play Area
- Senior Citizens Seating Area
- Women's Seating Area
- Music System In Landscaping Common Area
- Gazebo

Entrance Foyer of Building

- Name Plates Property Holders
- Notice Board
- Cameras Display TV
- Seating Area
- Letters Box

Campus Infrastructure

- Compound Wall Surrounding Campus Area With Exclusive Apex Paints & Trees Plantation
- Designer Main Entrance Gate With Security Cabin & Gate No.2.
- Landscaping & Both Entrance Having Waterfall
- Security Room With Toilet In Building
- Rain Water Harvesting System
- Street Lights, Parking Lights & Landscaping Garden Lights In The Campus
- Designer Paver Block Road
- Water & Drainage Network With Separate Storm Drain Network
- CCTV Cameras In The Campus
- RO Water Cooler For Staff At Campus & Servant At Ground Level

BUILDING AMENITIES

Lift

Well Interior & Digital Display Elevator Of Standard Company

Staircase

Tappa RCC Pardi in Railing & Vitrified Riser

Passage

24"x24" Vitrified Floor Tiles

Terrace

Two Coat Chemical Water Proofing with Bricks Bat Coba

Out Side Finish

Double Coat Sand Faced Plaster, With Apex Paints

Balcony

Designer Railing On All Balcony

Overhead Water Tank

Water Proofing Glaze Tiles Bottom

Parking

Chequered Tiles & Sufficient Space In Parking

Structure

Earthquake resistance RCC framed structure

D.G. Set

For Lift, Water Pumps, and sufficient points in common passage, street light, parking area

G.S.P.C. Gas Line

Panchmukhi residency promises to carry forward excellent motto of furnishing amenities par excellence and also taking care of the facilities perfectly under expert supervision.

Easily available communication & transportation with nearest NH 48 and Railway.





BIRD VIEW



Panchmukhi
RESIDENCY

ISOMETRIC VIEW



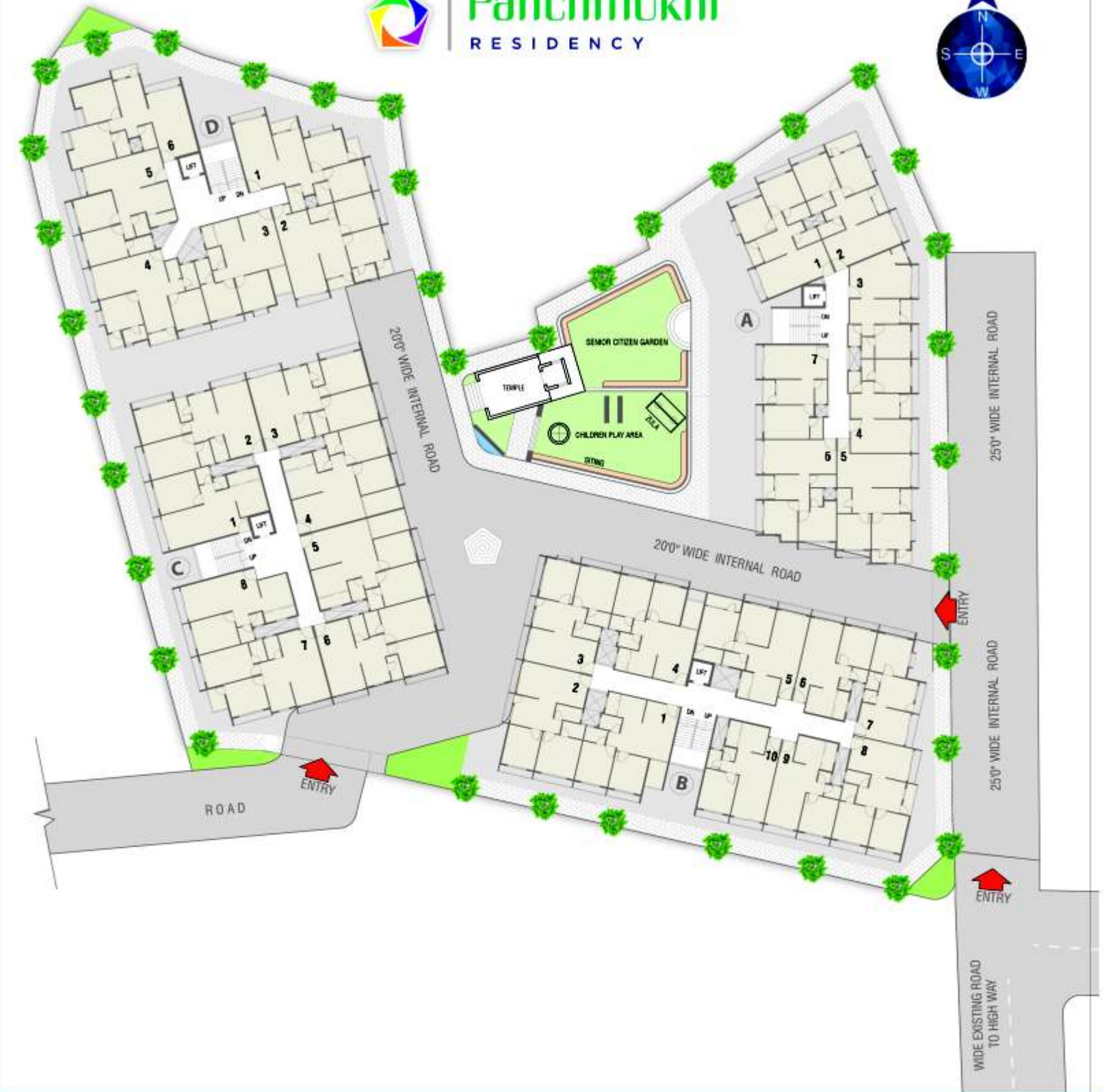
B BUILDING

TYPICAL FLOOR PLAN

FIRST, SECOND, THIRD,
FOURTH & FIFTH FLOOR



Panchmukhi
RESIDENCY



LAYOUT PLAN



ISOMETRIC VIEW



Entrance Gate



Landscape Garden



CCTV Surveillance



Security Cabin



DG Power Backup

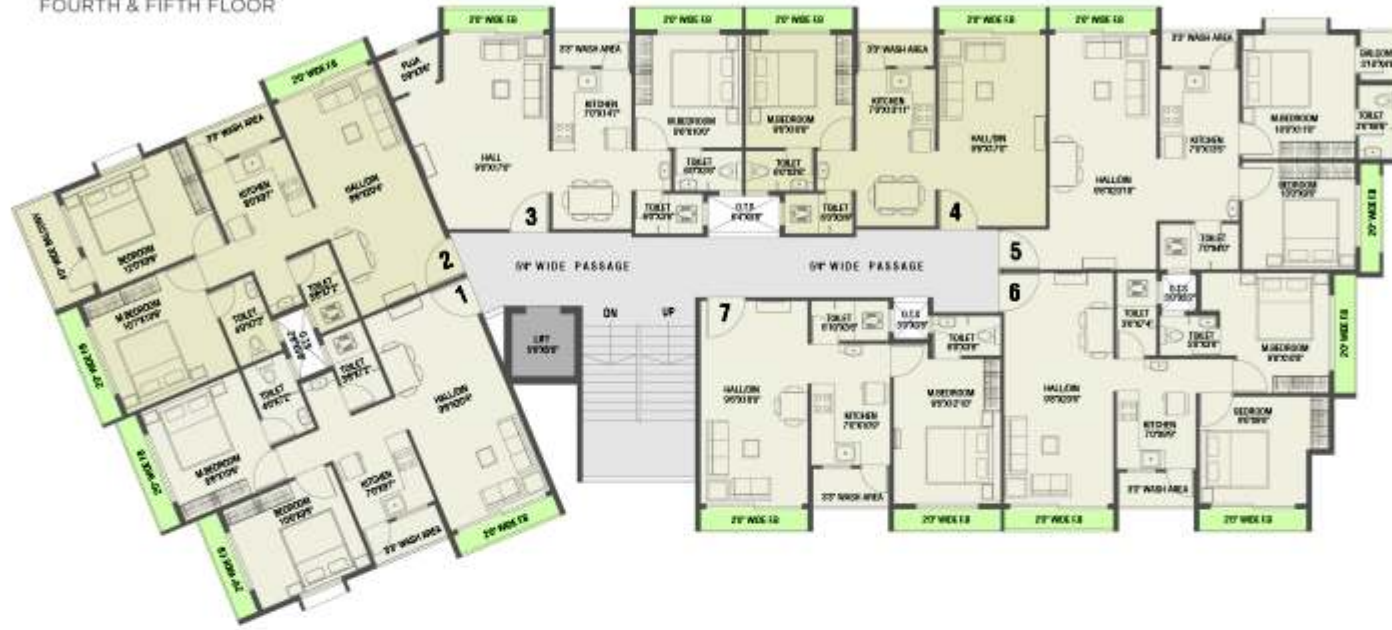


Stilt Car Parking

A BUILDING

TYPICAL FLOOR PLAN

FIRST, SECOND, THIRD,
FOURTH & FIFTH FLOOR



Senior Citizen Sitting



Garden Sitting



Attractive Foyer



LED Street lights



Children Play Area



Temple

